

SKYTOWER

R E S I D E N C E





Sky Tower

Unique residential high-rise complex of 23 floors with hotel facilities developed with the world's latest architecture & planning trends in mind. Residents will enjoy unbelievable sea panoramas and the exceptional atmosphere of comfort and relaxation in the elegant gated community with exceptional in-door amenities like concierge, SPA, common outdoor pool, heated indoor pool, gym, tennis court, green area and underground parking.

The complex blends ideally in the urban landscape of Limassol's sought after tourist area thanks to the well-

balanced mix of sophistication, comfort and landmark design by a leading London architecture studio. Limassol's best sandy beaches, shops, restaurants and other holiday pleasures are in a stone's throw.

The development comprises 1-, 2-, 3- and 4- bedroom luxurious apartments, penthouses and duplexes (sky houses) with private pools on the roof. Each unit has 3.15 m height ceilings and top quality finishings to astound the most demanding buyer. Most of the apartments offer breathtaking views of the Mediterranean sea, Limassol city and its picturesque hilly suburbs.

Major benefits

- Landmark architecture by a leading London studio
- **Limassol's only high-rise condominium without noise from the busy beachfront road**
- Unobstructed sea panoramas
- Hotel-style facilities: concierge, SPA, outdoor and indoor pools, gym, tennis court, large park with mature gardens, underground parking
- 300 meters to a sandy beach
- Heart of Limassol's tourist area
- All necessary amenities within walking distance
- High ceilings (3.15 meters net)
- High standard finishes (marble floors, high doors of 2.4 m, security entrance doors, thermal aluminum window frames, top standard in-built furniture, sanitary ware)
- Provision for water underfloor heating and VRV air conditioning
- Penthouses with private roof gardens and pools









Location

Limassol is known as the city for everyone. It is the second largest and by far the most flourishing city in Cyprus. It combines the fast pace of a city and the comfort of a firstclass Mediterranean resort.

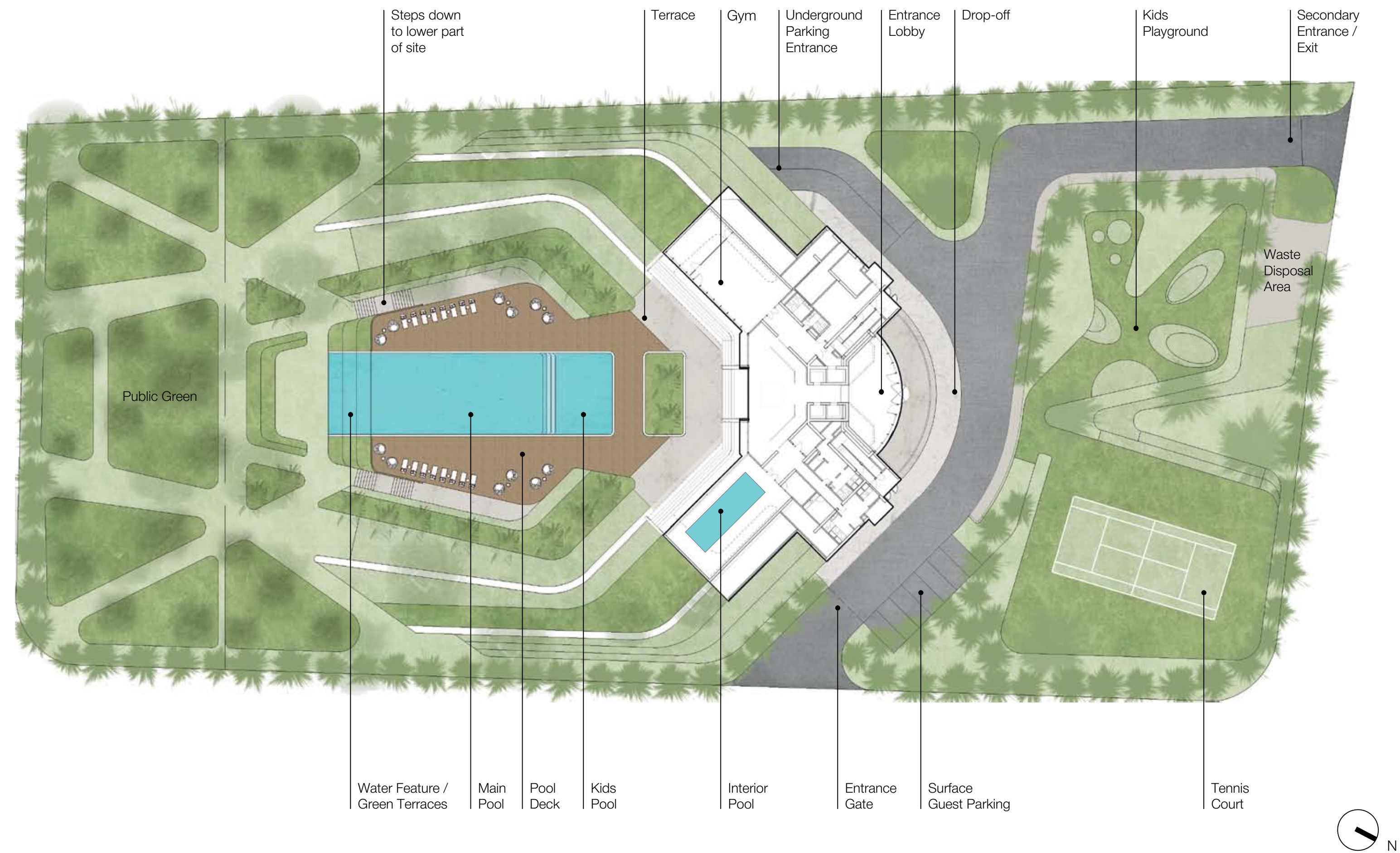
The city offers a diverse variety of pleasures such as the dynamic metropolitan city for business, infinite sandy beaches, interesting historical sites, restaurants with all sorts of food for the most sophisticated gour-

rets, and the shopping areas; you'll find it all and much more in Limassol!

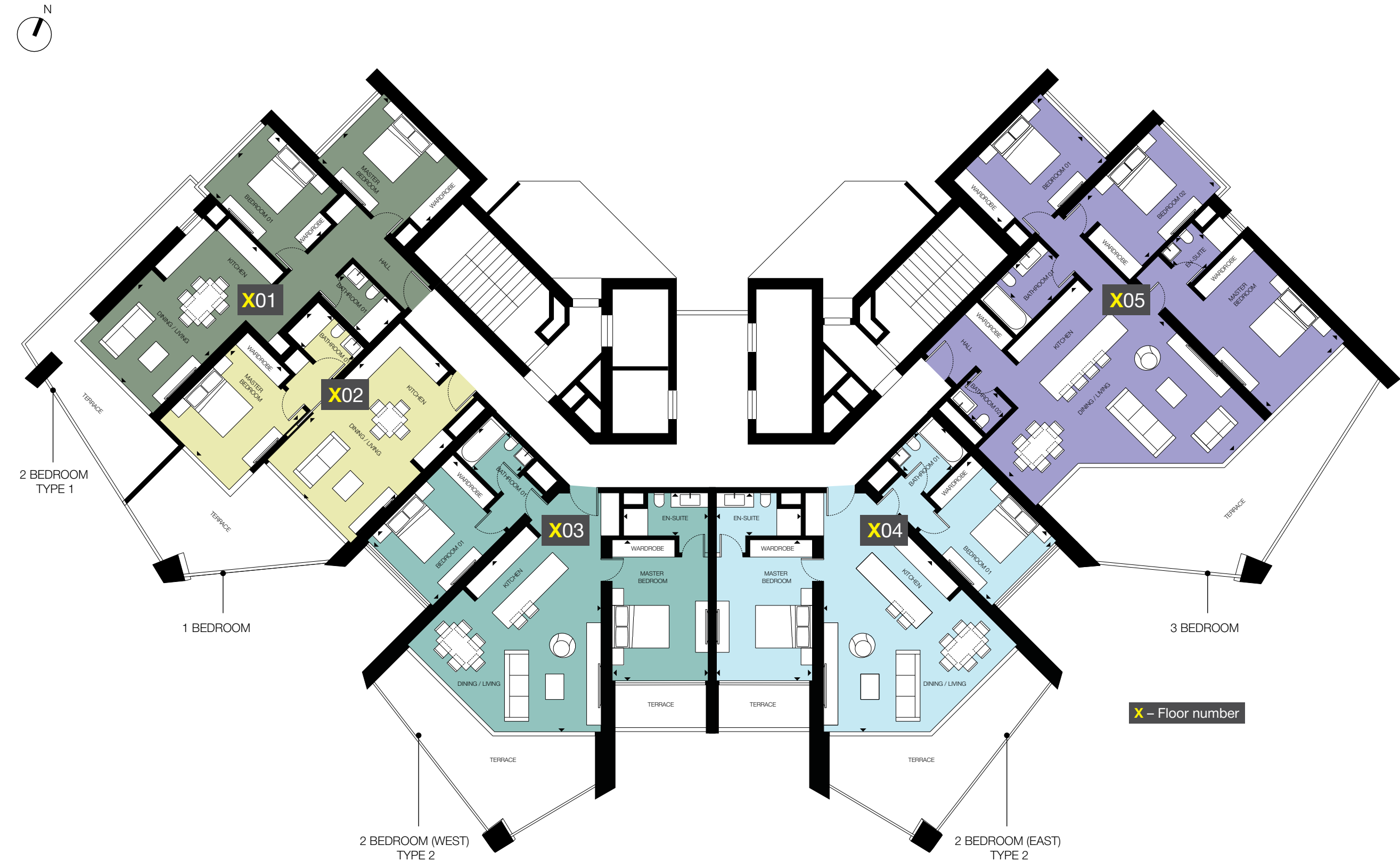
The project is nestled in a carefully selected, quiet and safe neighborhood of the prestigious Potamos Germasogeia area of Limassol, just 300 meters away from the best sandy beaches of the tourist area and Limassol's best leisure spots, banks, pharmacies and food stores.

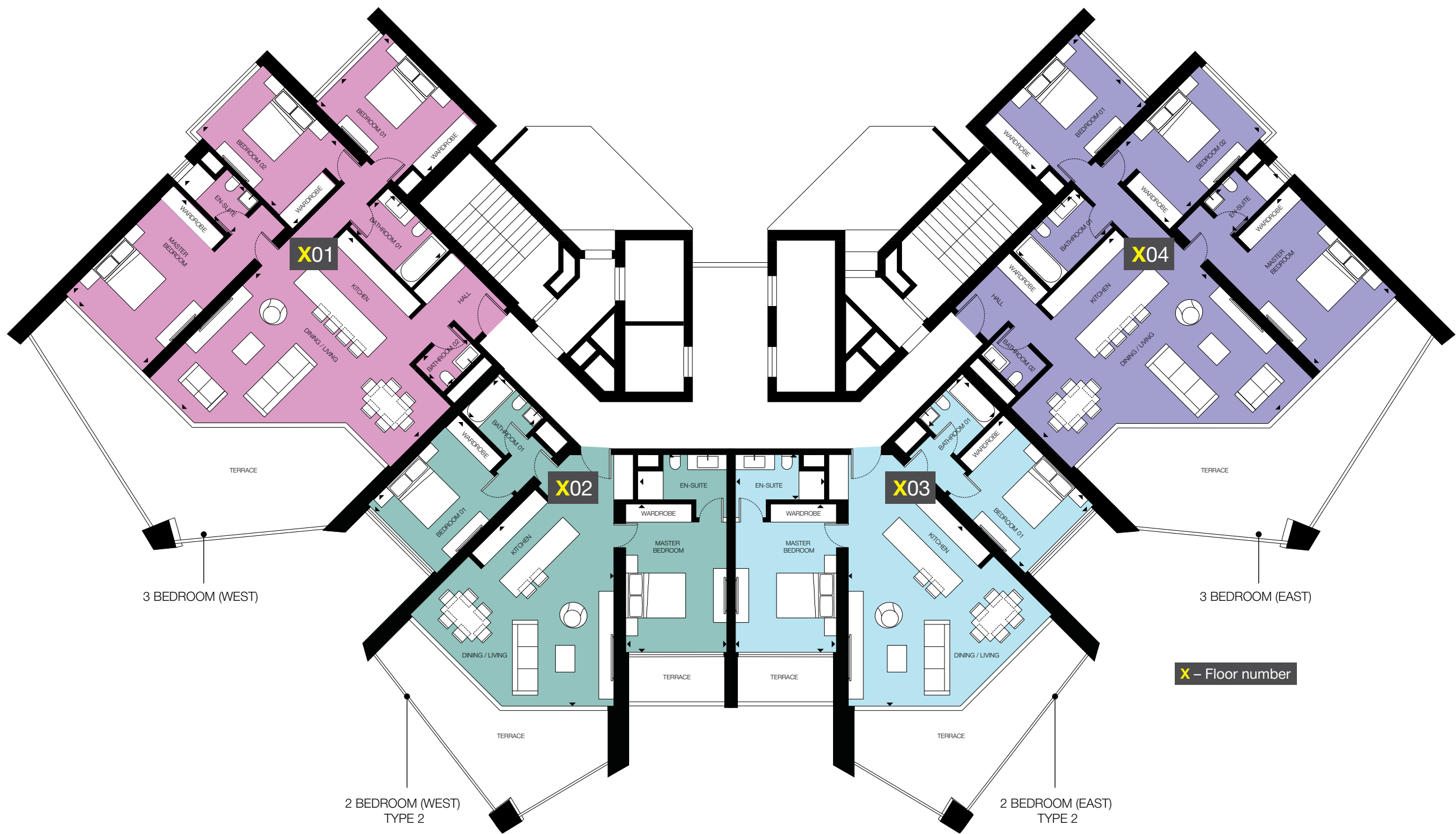






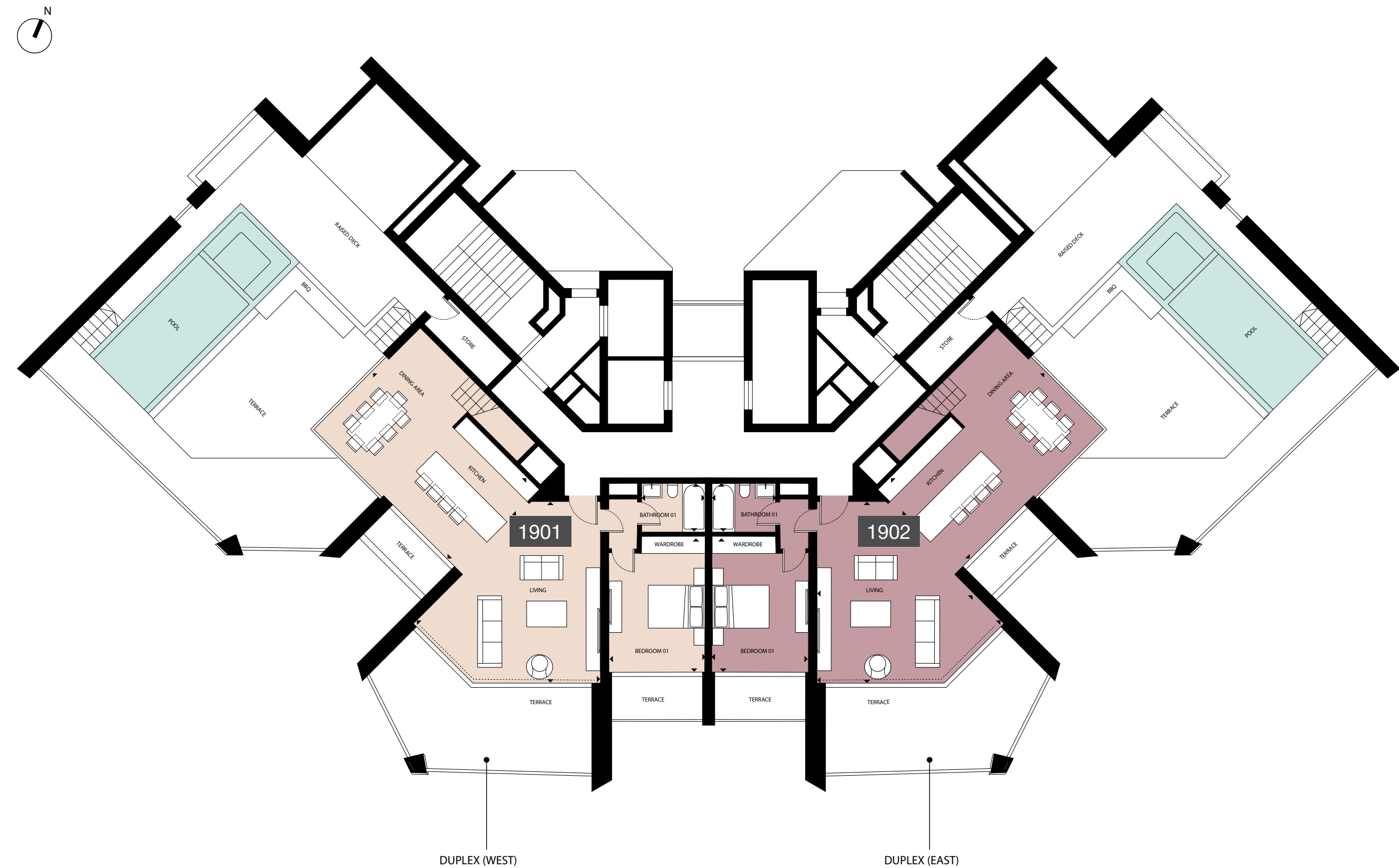






2 BEDROOM - TYPE 2	
UNIT AREA	92.35 sq m
Covered veranda	22.36 - 26.42 sq m
Living / Dining / Kitchen	7.8 m x 8 m
Master Bedroom	4.95 m x 3.4 m
En-Suite	1.5 m x 3 m
Bedroom 01	4.25 m x 3.2 m

3 BEDROOM	
UNIT AREA	130.02 / 131.37 sq m
Covered veranda	28.92 - 38.25 sq m
Living / Dining / Kitchen	7.80 m x 8.15 m
Master Bedroom	3.80 m x 5.10 m
En-Suite	1.50 m x 2.40 m
Bedroom 01	3.35 m x 4.30 m
Bathroom 01	1.80 m x 2.90 m
Bedroom 02	3.15 m x 4.50 m
Bathroom 02	1.80 m x 1.30 m



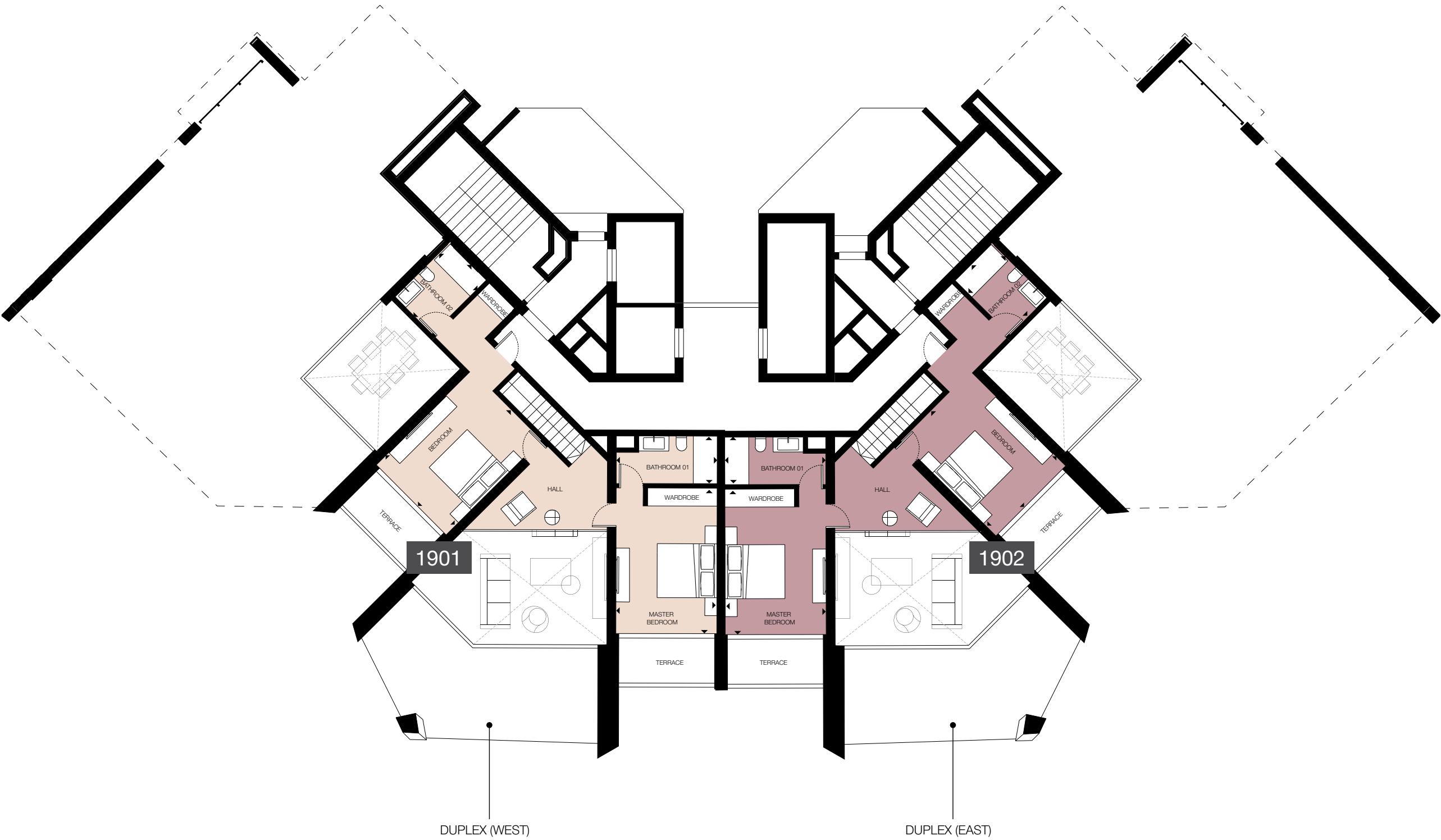
Total Duplex Area 164.42 sq m

LOWER LEVEL:

UNIT AREA 97.22 sq m
Covered veranda 45.40 sq m
Uncovered veranda 116.04 sq m

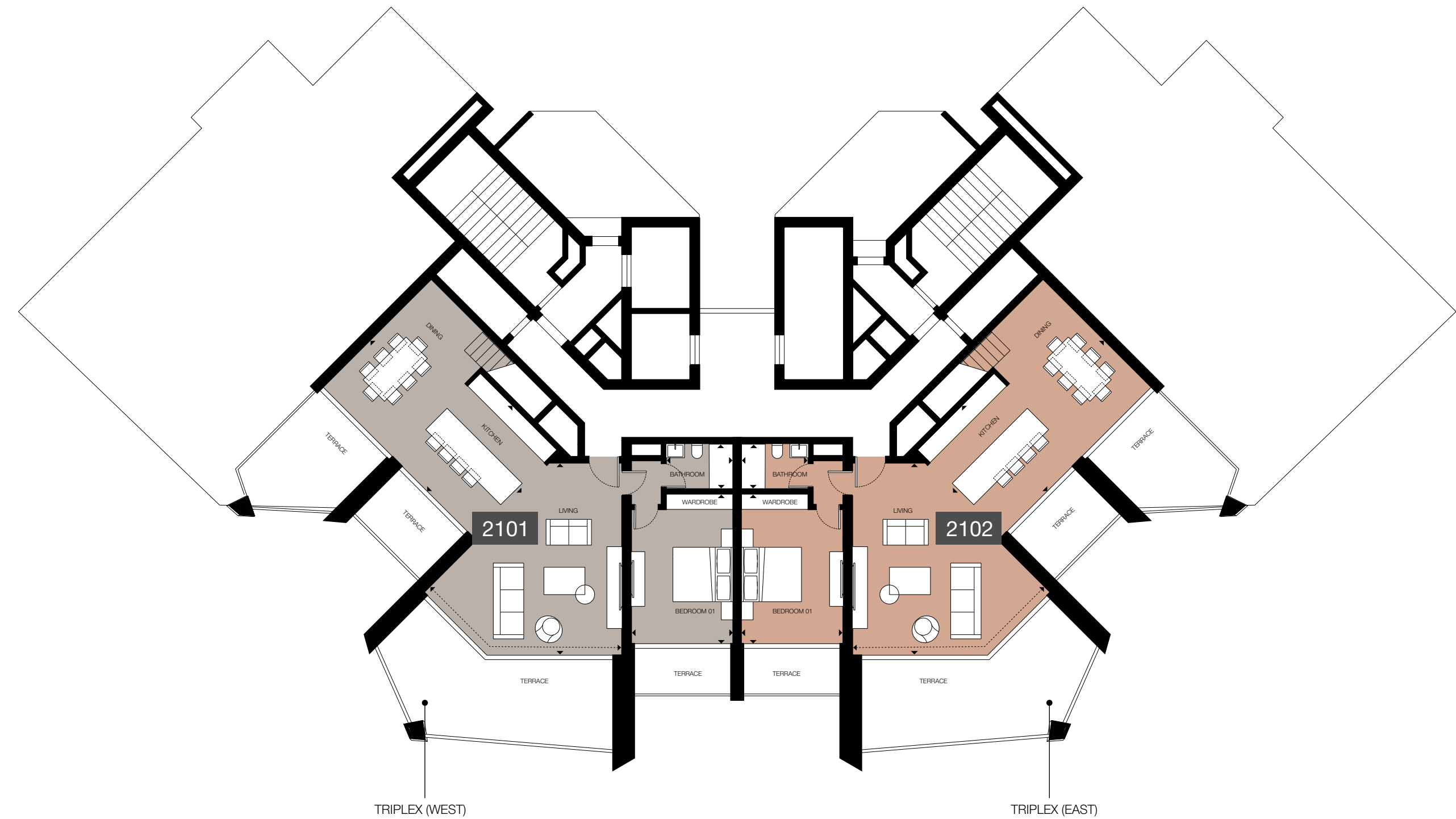
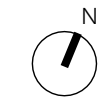
Dining / Kitchen 5.20 m x 7.00 m
Living 6.35 m x 7.40 m

Bedroom 01 3.40 m x 4.75 m
Bathroom 01 1.70 m x 2.25 m



UPPER LEVEL:

UNIT AREA	67.20 sq m
Covered veranda	10.63 sq m
Master Bedroom	3.35 m x 4.95 m
Bathroom 01	3.35 m x 1.50 m
Bedroom	3.35 m x 4.50 m
Bathroom 02	2.60 m x 1.75 m



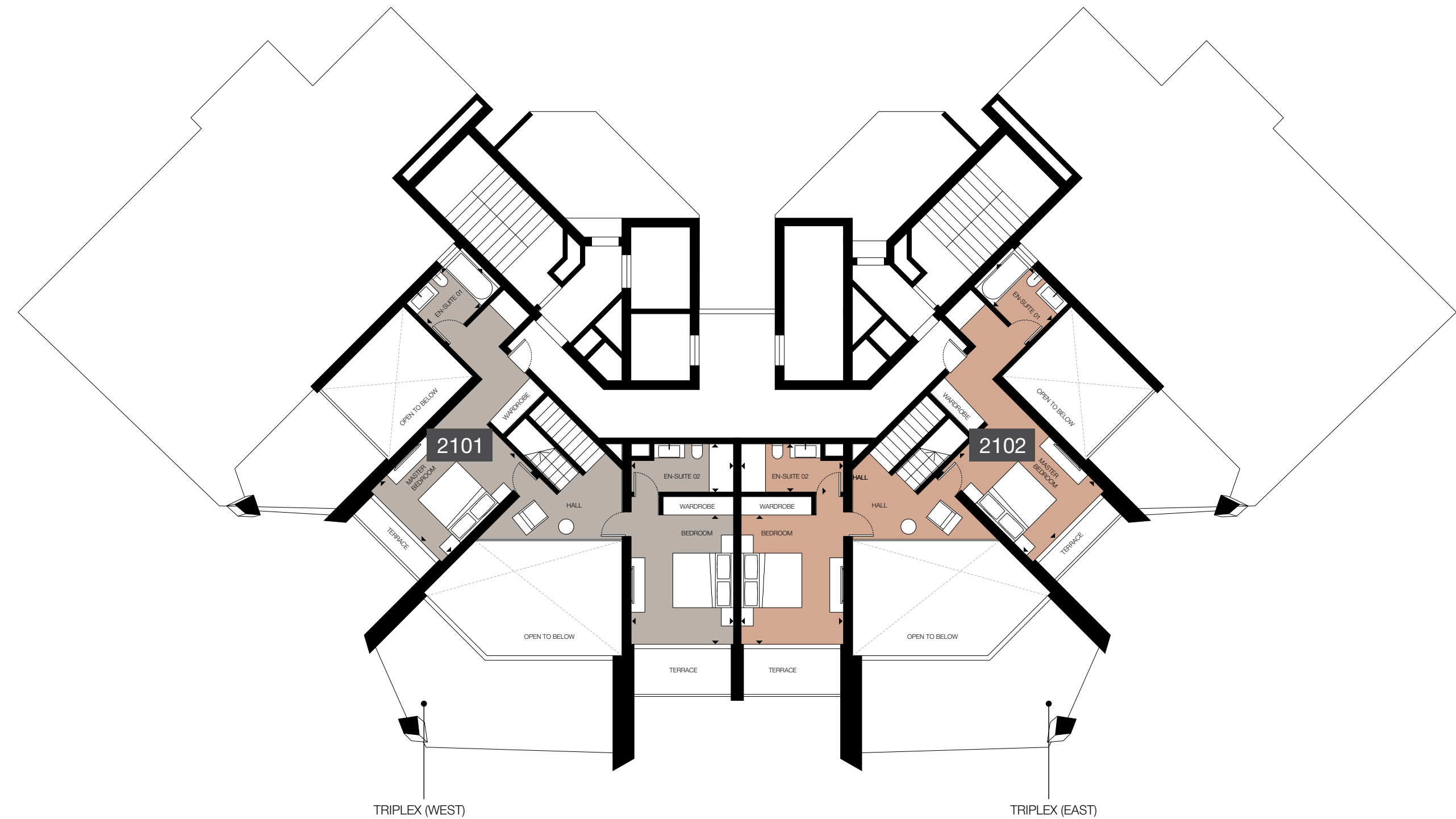
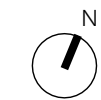
Total Internal Area 200.96 sq m

LOWER LEVEL

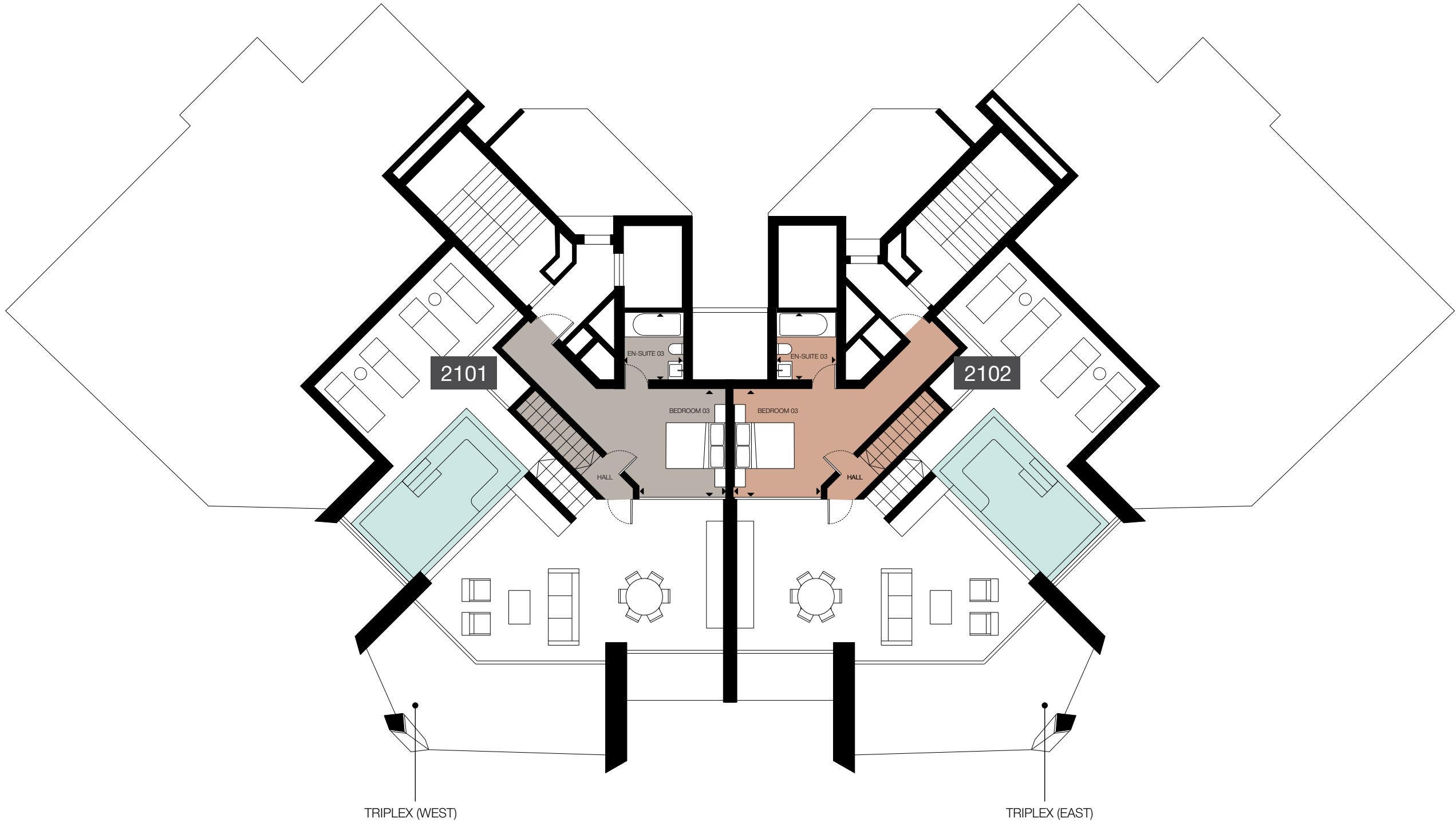
INTERNAL AREA 97.22 sq m

Covered Veranda 18.61 sq m
Uncovered Veranda 29.63 sq m

Dining / Kitchen 5.00 m x 7.00 m
Living 6.35 m x 5.70 m
Bedroom 01 4.75 m x 3.40 m
Bathroom 1.70 m x 2.25 m



MID LEVEL	
INTERNAL AREA	73.39 sq m
Covered Veranda	2.68 sq m
Uncovered Veranda	5.27 sq m
Master Bedroom	3.30 m x 4.25 m
En-suite 01	1.75 m x 2.90 m
Bedroom 02	4.95 m x 3.40 m
En-suite 02	1.50 m x 3.40 m



TOP LEVEL	
INTERNAL AREA	30.35 sq m
Uncovered Veranda	97.71 sq m
Bedroom 03	3.50 m x 2.90 m
En-suite 03	2.20 m x 1.95 m

property	floor	type	bedrooms	indoor area, sq.m.	cov. veranda, sq.m.	uncov. veranda, sq.m.	roof terrace sq.m.	total area, sq.m.	private pool
101	1	Apartment	2	77.1	17.0	0	0	94.2	-
102	1	Apartment	1	54.4	13.8	0	0	68.2	-
103	1	Apartment	2	92	22.2	0	0	114.2	-
104	1	Apartment	2	92.2	22.2	0	0	114.4	-
105	1	Apartment	3	131.9	28.6	0	0	160.5	-
201	2	Apartment	2	77.1	17.9	0	0	95	-
202	2	Apartment	1	54.4	16	0	0	70.4	-
203	2	Apartment	2	92	23.6	0	0	115.5	-
204	2	Apartment	2	92.2	23.6	0	0	115.8	-
205	2	Apartment	3	131.9	31.7	0	0	163.6	-
301	3	Apartment	2	77.1	18.8	0	0	95.9	-
302	3	Apartment	1	54.5	18.1	0	0	72.5	-
303	3	Apartment	2	92	24.9	0	0	116.9	-
304	3	Apartment	2	92.2	24.9	0	0	117.1	-
305	3	Apartment	3	131.9	34.8	0	0	166.7	-
401	4	Apartment	2	77.1	19.7	0	0	96.9	-
402	4	Apartment	1	54.4	20.2	0	0	74.6	-
403	4	Apartment	2	92	26.3	0	0	118.3	-
404	4	Apartment	2	92.2	26.3	0	0	118.5	-
405	4	Apartment	3	131.9	37.9	0	0	169.9	-
501	5	Apartment	2	77.1	20.8	0	0	97.9	-
502	5	Apartment	1	54.4	22.2	0	0	76.6	-
503	5	Apartment	2	92	27.7	0	0	119.6	-
504	5	Apartment	2	92.2	27.7	0	0	119.9	-
505	5	Apartment	3	131.9	41.1	0	0	173	-
601	6	Apartment	2	77.1	20.5	0	0	97.6	-
602	6	Apartment	1	54.4	21.6	0	0	76	-
603	6	Apartment	2	92	27.2	0	0	119.2	-
604	6	Apartment	2	92.2	27.2	0	0	119.5	-
605	6	Apartment	3	131.9	40.1	0	0	172.1	-
701	7	Apartment	2	77.1	12.3	7.9	0	97.3	-
702	7	Apartment	1	54.4	21	0	0	75.4	-
703	7	Apartment	2	92	26.8	0	0	118.8	-
704	7	Apartment	2	92.2	26.8	0	0	119.1	-
705	7	Apartment	3	131.9	39.2	0	0	171.1	-
801	8	Apartment	3	130	38.3	0	0	168.3	-
802	8	Apartment	2	92.4	26.4	0	0	118.8	-
803	8	Apartment	2	92.4	26.4	0	0	118.8	-
804	8	Apartment	3	131.3	38.3	0	0	169.6	-
901	9	Apartment	3	130	37.3	0	0	167.4	-
902	9	Apartment	2	92.4	26	0	0	118.4	-
903	9	Apartment	2	92.4	26	0	0	118.4	-
904	9	Apartment	3	131.4	37.3	0	0	168.7	-

property	floor	type	bedrooms	indoor area, sq.m.	cov. veranda, sq.m.	uncov. veranda, sq.m.	roof terrace sq.m.	total area, sq.m.	private pool
1001	10	Apartment	3	130	36.4	0	0	166.4	-
1002	10	Apartment	2	92.4	25.6	0	0	118	-
1003	10	Apartment	2	92.4	25.6	0	0	118	-
1004	10	Apartment	3	131.4	36.4	0	0	167.8	-
1101	11	Apartment	3	130	35.5	0	0	165.5	-
1102	11	Apartment	2	92.4	25.2	0	0	117.6	-
1103	11	Apartment	2	92.4	25.2	0	0	117.6	-
1104	11	Apartment	3	131.4	35.5	0	0	166.8	-
1201	12	Penthouse	3	130	34.5	0	0	164.6	-
1202	12	Penthouse	2	92.4	24.8	0	0	117.1	-
1203	12	Penthouse	2	92.4	24.8	0	0	117.1	-
1204	12	Penthouse	3	131.4	34.5	0	0	165.9	-
1301	13	Apartment	3	130	33.6	0	0	163.6	-
1302	13	Apartment	2	92.4	24.4	0	0	116.7	-
1303	13	Apartment	2	92.4	24.4	0	0	116.7	-
1304	13	Apartment	3	131.3	33.6	0	0	165	-
1401	14	Apartment	3	130	32.7	0	0	162.7	-
1402	14	Apartment	2	92.4	24	0	0	116.3	-
1403	14	Apartment	2	92.4	24	0	0	116.3	-
1404	14	Apartment	3	131.3	32.7	0	0	164	-
1501	15	Apartment	3	130	31.7	0	0	161.8	-
1502	15	Apartment	2	92.4	22.6	0	0	114.9	-
1503	15	Apartment	2	92.4	22.6	0	0	114.9	-
1504	15	Apartment	3	131.4	31.7	0	0	163.1	-
1601	16	Apartment	3	130	30.8	0	0	160.8	-
1602	16	Apartment	2	92.4	23.2	0	0	115.5	-
1603	16	Apartment	2	92.4	23.2	0	0	115.5	-
1604	16	Apartment	3	131.4	30.8	0	0	162.2	-
1701	17	Apartment	3	130	29.9	0	0	159.9	-
1702	17	Apartment	2	92.4	22.8	0	0	115.1	-
1703	17	Apartment	2	92.4	22.8	0	0	115.1	-
1704	17	Apartment	3	131.4	29.9	0	0	161.2	-
1801	18	Apartment	3	130	28.9	0	0	159	-
1802	18	Apartment	2	92.4	22.4	0	0	114.7	-
1803	18	Apartment	2	92.4	22.4	0	0	114.7	-
1804	18	Apartment	3	131.4	28.9	0	0	160.3	-
1901	19	Duplex	3	164.4	56.0	116	0	336.5	yes
1902	19	Duplex	3	164.4	56.0	116	0	336.5	yes
2101	21	Penthouse	4	201	21.3	34.9	97.7	354.9	yes
2102	21	Penthouse	4	201	21.3	34.9	97.7	354.9	yes

















